

CSG-3000

Dynamic Concrete Strain Gauge

Dynamic concrete strain gauges measure axial strain in flexible pavement under high frequency (dynamic) conditions. Utilizing four active elements of a Wheatstone bridge circuit, this gauge compensates for temperature, and rejects bending strain, providing a sensor that is easily adaptable to most data acquisition systems without requiring additional signal conditioning.

Because of their low-profile design, these sensors can be used in concrete pavements, columns, walls, bridge elements or wherever dynamic strains need to be measured.

Each sensor is provided with end washers, nuts and are individually calibrated and supplied with fabrication Quality-Control documentation.

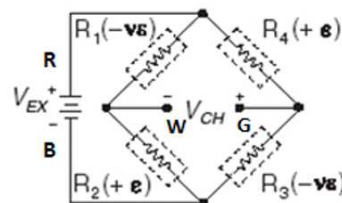


5/16" Diameter by 8" Long Sensor



Features

- RoHS Compliant
- Uses a combination of M-Coat A, M-Coat C, wax and electrical tape as coating
- Jewell can accommodate up to 250ft max of cable
- #22 or #30 AWG, 4-Conductor, Shielded, Teflon-Jacketed Cable available



PIN OUT:

RED	P+
BLACK	P-
GREEN	S+
WHITE	S-
2.0 to 5.0	Vdc



PERFORMANCE SPECIFICATIONS

PERFORMANCE

BRIDGE CIRCUIT	Four active 350-ohm strain gauges
RANGE	±2000 microstrain
SENSITIVITY AT 1000 $\mu\epsilon$	~ 1.3 mV/V Nominal
EXCITATION	up to 10 Volts
OPERATING TEMP RANGE	-34 °C to +100 °C
Cable	22 AWG Truck weight or 30AWG Teflon

Specifications are subject to change without notice due to continued product development

ORDERING INFORMATION

HOW TO ORDER

PART #	DESCRIPTION
815-00003-ROHS	CSG-3000 with 15 ft. cable (22AWG Truck weight cable)
815-00004-ROHS	CSG-3000 with 50 ft. cable (22AWG Truck weight cable)
815-00005-ROHS	CSG-3000 with 15 ft. cable (30AWG Teflon cable)

Purchase of Jewell Strain Gauge Includes:
Installation of customer specified length of lead wire based on above options
Gauge factor correction for lead wire desensitization
Tension load application and data collection in μ -strain/mV
Calibration and data collection. A copy of the calibration & test report will be provided with each unit